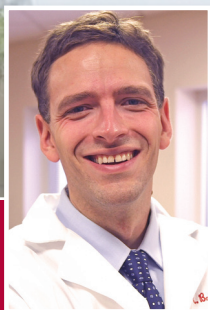




## Dr. Keith Baldwin Surgical Oncology



**Keith Baldwin, D.O.**

Dr. Baldwin specializes in the surgical treatment of a wide range of cancers, and collaborates with Radiation and Medical Oncology for the multidisciplinary care of patients with cancer. In addition to Surgical Oncology, he has a special interest in Thyroid and Parathyroid Surgery, as well as Minimally Invasive Colon and Rectal Surgery. As a Board Certified General Surgeon, he also treats the full spectrum of general surgical conditions, including abdominal wall hernias.

Dr. Baldwin is Board Certified in General Surgery, and completed the two-year Society of Surgical Oncology Program in Surgical Oncology. He is an Assistant Professor of Surgery at Boston University.

**Roger  
Williams**

**MEDICAL  
CENTER**

*An affiliate of CharterCARE Health Partners*



A MAJOR TEACHING AND RESEARCH AFFILIATE OF THE  
BOSTON UNIVERSITY SCHOOL OF MEDICINE



## Services Provided

### Endocrine Surgery:

- Thyroid Cancer, including surgical management of recurrent and lymph node-positive cancers
- Fine Needle Aspirations and Neck Ultrasound for goiters and thyroid nodules
- Parathyroidectomy (Minimally Invasive)
- Adrenal Masses
- Breast Cancer Surgery and multidisciplinary care

### Colon and Rectal Surgery:

- Colon and Rectal Cancer, employing laparoscopic minimally invasive approaches
- Management of Colon and Rectal cancer with Liver metastases
- Diverticulitis
- Surgical interventions for Crohn's Disease and Ulcerative Colitis

### General Surgery and Surgical Oncology:

- Gallstones, Inguinal and ventral hernias, adhesions
- Surgery for gastric, small bowel, pancreatic and liver masses
- Heated Intraperitoneal Chemotherapy for Peritoneal Surface Malignancies

**To refer a patient to Dr. Baldwin, please contact  
Roger Williams Medical Center at (401) 456-2077**

**Roger  
Williams**

**MEDICAL  
CENTER**

*An affiliate of CharterCARE Health Partners*



825 Chalkstone Avenue , Providence, RI 02908

[www.rwmc.org](http://www.rwmc.org)

